



N L A

nuno leónidas
arquitectos

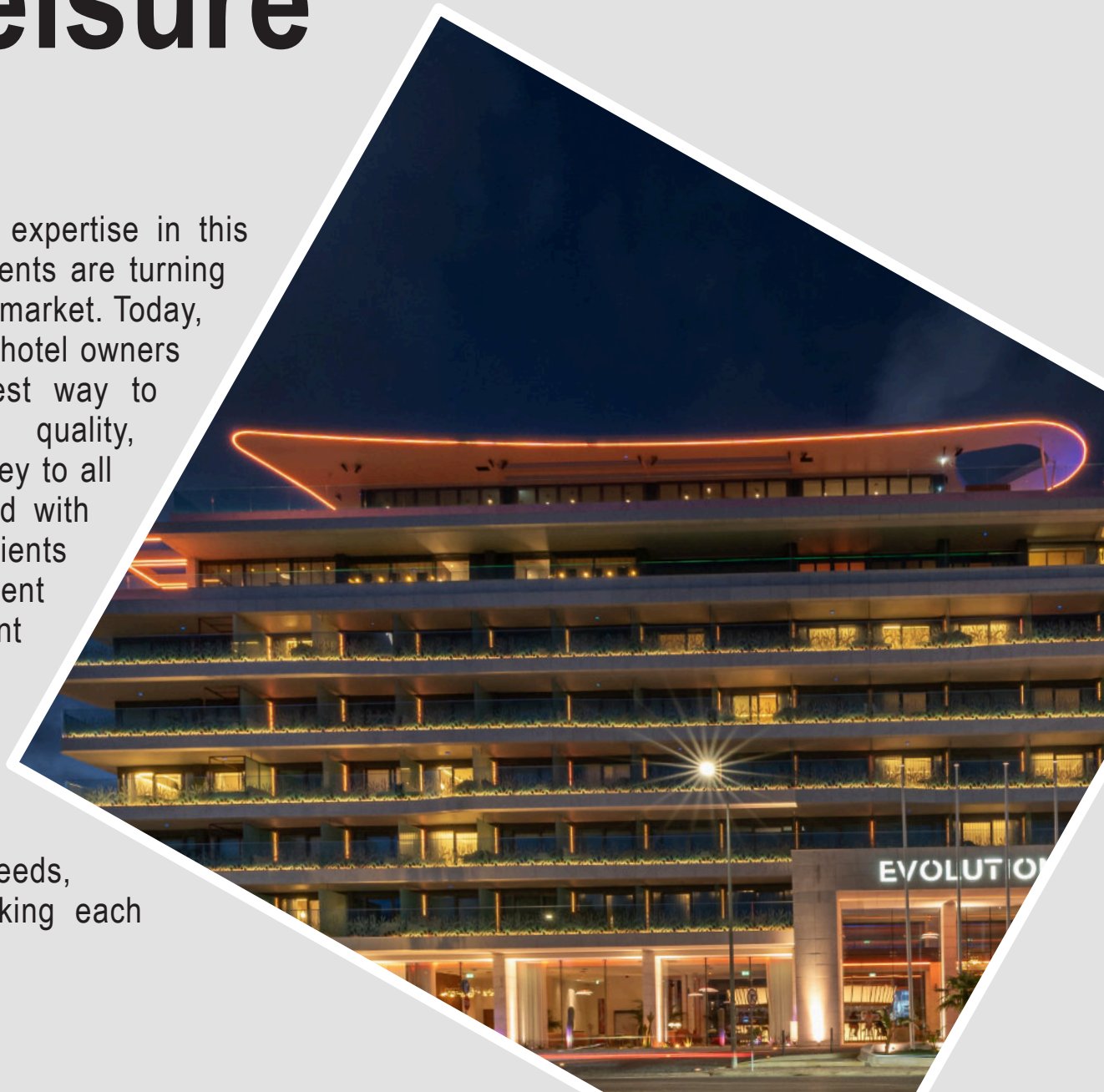
40 years of Proficiency

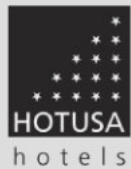
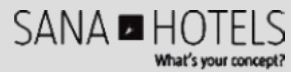
The **Mastery** behind the **Quality** of our designs is Consistently reflected in the **experience** provided for **those** that enjoy the **timeless comfort, efficiency, accuracy, and creativity** of our projects.

Hotels & Leisure

Over 50 accomplished projects

Over the last **40 years**, we've developed expertise in this market niche, realizing that capital investments are turning tourism and leisure into a significant growth market. Today, we fully understand and meet the needs of hotel owners and operators, advising them on the best way to advance their programs. Experience, quality, innovative design, and budget control are key to all our projects, some of which are developed with international design teams. Business hotel clients seek comfort, convenience, and excellent communications, while leisure travelers want a unique, unforgettable experience. Hotels must be designed to make guests feel at home even when working. Designers should capture each location's atmosphere and character, incorporating them into the design. Each operator has unique needs, corporate image, and business style, making each project a distinct challenge.







Design Hotels



SANA EVOLUTION CASCAIS-ESTORIL ****



SANA EVOLUTION CASCAIS-ESTORIL ****



SANA EVOLUTION CASCAIS-ESTORIL ****



SANA EVOLUTION CASCAIS-ESTORIL ****



SANA EVOLUTION SALDANHA ****



SANA EVOLUTION SALDANHA ****



SANA EVOLUTION SALDANHA ****



SANA EVOLUTION SALDANHA ****



yotel

YOTEL PORTO ****



YOTEL PORTO ****



YOTEL PORTO ****

The background features a dark wood grain texture on the left and right sides. In the center, there are two vertical rectangular panels. Each panel contains a complex, wavy pattern of thin, dark lines that create a sense of depth and movement, resembling a stylized topographic map or a liquid surface. The overall color palette is warm, dominated by various shades of brown and tan.

Luxury Hotels



MYRIAD BY SANA *****



MYRIAD BY SANA *****

MYRIAD
by SANA HOTELS



MYRIAD BY SANA *****



MYRIAD BY SANA *****

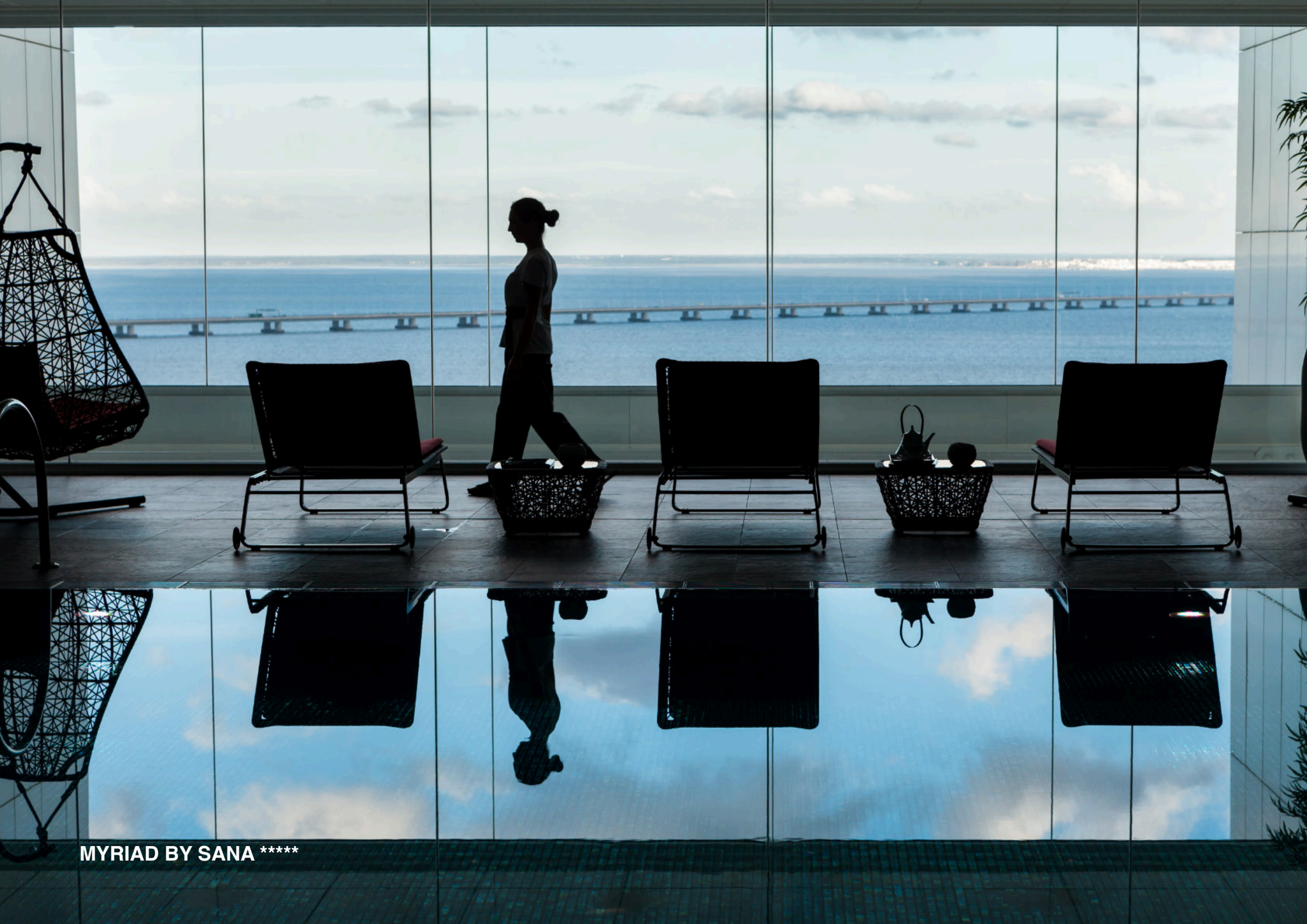




MYRIAD BY SANA *****



MYRIAD BY SANA *****



MYRIAD BY SANA *****



EPIC SANA

SANA
HOTEL

EPIC SANA LISBOA HOTEL *****



EPIC SANA LISBOA HOTEL *****



EPIC SANA LISBOA HOTEL *****



EPIC SANA LISBOA HOTEL *****



EPIC SANA LISBOA HOTEL *****



EPIC SANA LISBOA HOTEL *****



EPIC SANA LISBOA HOTEL *****



apa

EPIC SANA

EPIC SANA MARQUÊS *****

ba

EPIC SANA

EPIC SANA

BPI BPI

EPIC SANA MARQUÊS *****





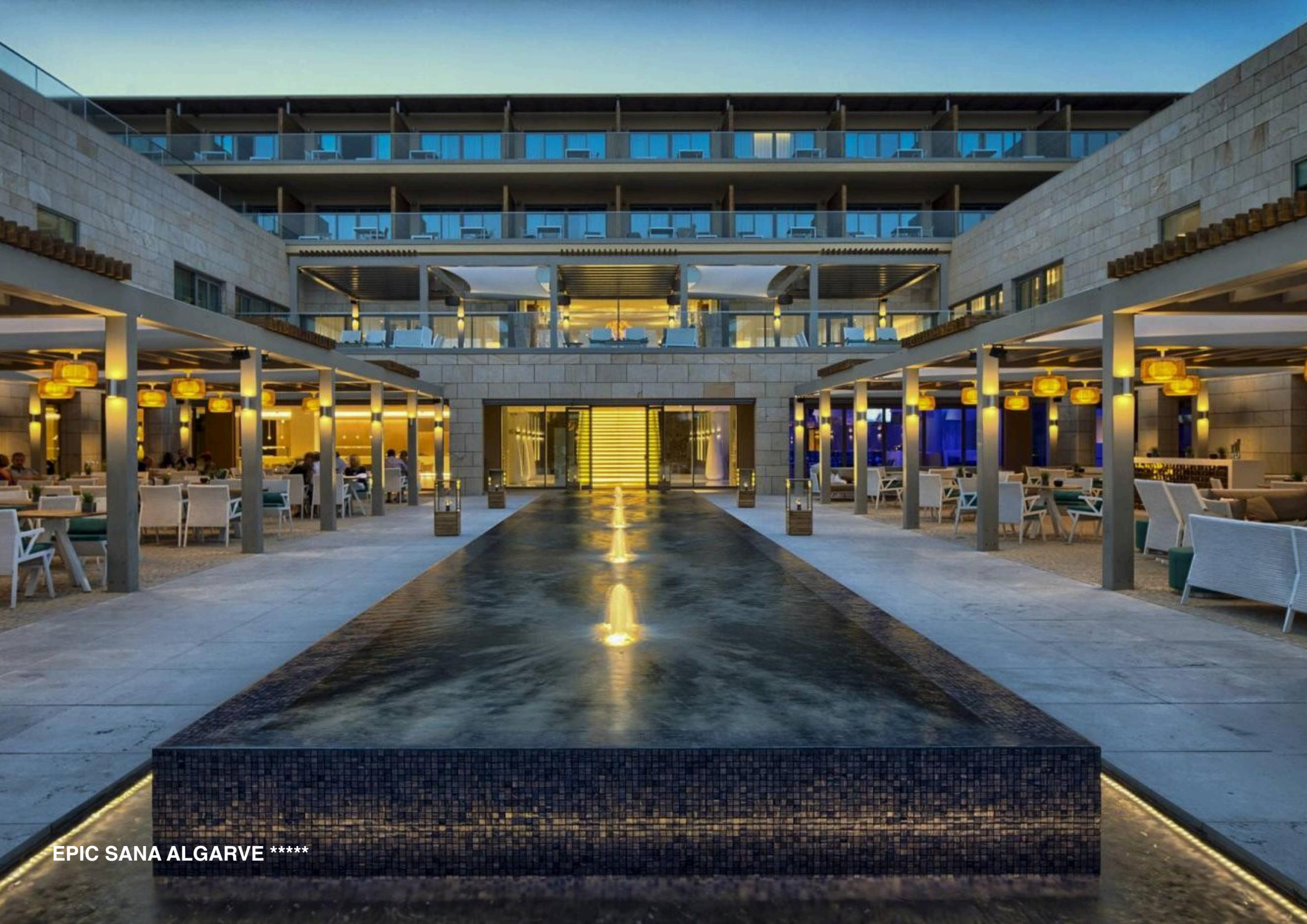
EPIC SANA LUANDA HOTEL *****







Resorts



EPIC SANA ALGARVE *****



EPIC SANA ALGARVE *****



EPIC SANA ALGARVE *****



EPIC SANA ALGARVE *****



EPIC SANA ALGARVE *****



EPIC SANA ALGARVE *****



AMENDOEIRA GOLF RESORT *****



AMENDOEIRA GOLF RESORT

ALCANTARILHA CURVE



MARINA DE LAGOS



MARINA DE LAGOS



DOM PEDRO RESIDENCES VILAMOURA ****



VILLAS D'ÁGUA ****



IKOS CORTESIA

Vila Verde

R E S O R T



INTERNATIONAL PROPERTY
AWARDS 2006



BEST
ARCHITECTURE
(MULTIPLE UNITS)
CAPEVERDE

Vila Verde Resort
by Nuno Leonidas
and Tecnical





VILA VERDE RESORT *****



PINE CLIFFS RESIDENCE *****



City Hotels




EUROSTARS
HOTELS


EUROSTARS

HOTEL EUROSTARS CASCAIS ****



HOTEL MERCURE LISBOA ALMADA ****



HOTEL MERCURE LISBOA ALMADA ****

Dom Pedro



Dom Pedro
Lisboa

HOTEL DOM PEDRO LISBOA *****



HOTEL SOFITEL LISBOA *****



Heritage



HOTEL DOS REIS***



HOTEL CORPO SANTO *****



WC HOTEL ****



HOTEL BAIRRO ALTO *****



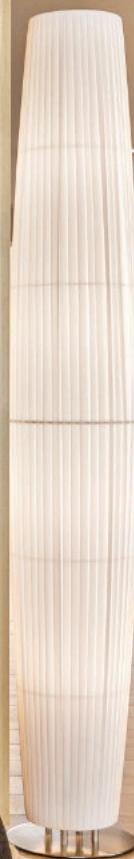
Interior Design



HOTEL EUROSTARS SALDANHA *****



WYNDHAM



WYNDHAM RESIDENCES ALVOR ****

R
E
C
E
P
Ç
Ã
O

R
E
C
E
P
T
I
O
N

WINDHAM RESIDENCES ALVOR ****



HOTEL MARQUÊS DE POMBAL ****



6

HOTEL MERCURE LISBOA ****



HOTEL SANTA JUSTA ****



THE LEAF BOUTIQUE HOTEL



INTERNATIONAL DESIGN HOTEL LISBOA ****

The image is a vertical collage of three distinct textures. On the left, there is a detailed mosaic of small, square tiles in various shades of blue, black, and brown, some with raised, square patterns. In the center, there are larger, rectangular tiles with a natural stone or terracotta appearance, showing organic patterns and warm tones. On the right, there is a close-up of a perforated metal panel with a grid of rectangular holes, creating a rhythmic pattern of light and shadow.

SPA Projects



EPIC SANA LISBOA HOTEL *****



MYRIAD BY SANA *****



MYRIAD BY SANA *****



EPIC SANA ALGARVE HOTEL *****

A large, modern indoor swimming pool with a high ceiling and large glass windows. The pool is surrounded by lounge chairs and a hanging chair. The ceiling has a grid of skylights. The floor is light-colored tile. The pool water is clear and blue. The lounge chairs are dark brown with white frames. The hanging chair is white and ornate. The glass windows offer a view of a lush garden with palm trees and other tropical plants. The overall atmosphere is clean, bright, and relaxing.

EPIC SANA ALGARVE HOTEL *****

EPIC SANA ALGARVE HOTEL *****

A conference room with a vibrant red wall. A white, grid-like structure is mounted on the wall, consisting of a horizontal bar with several vertical and diagonal bars extending from it. In the foreground, there are two long, dark wooden tables. Each table is set with a white chair, a water bottle, and a glass. The floor is covered with a patterned carpet. The word "Conference" is written in white text on a semi-transparent red background that spans across the middle of the image.

Conference



EPIC SANA LISBOA HOTEL *****

EPIC SANA
MY EPIC IDEAS

MY EPIC IDEAS



EPIC SANA ALGARVE HOTEL *****



MYRIAD BY SANA *****

Quality

ISO 9001-Certified Excellence

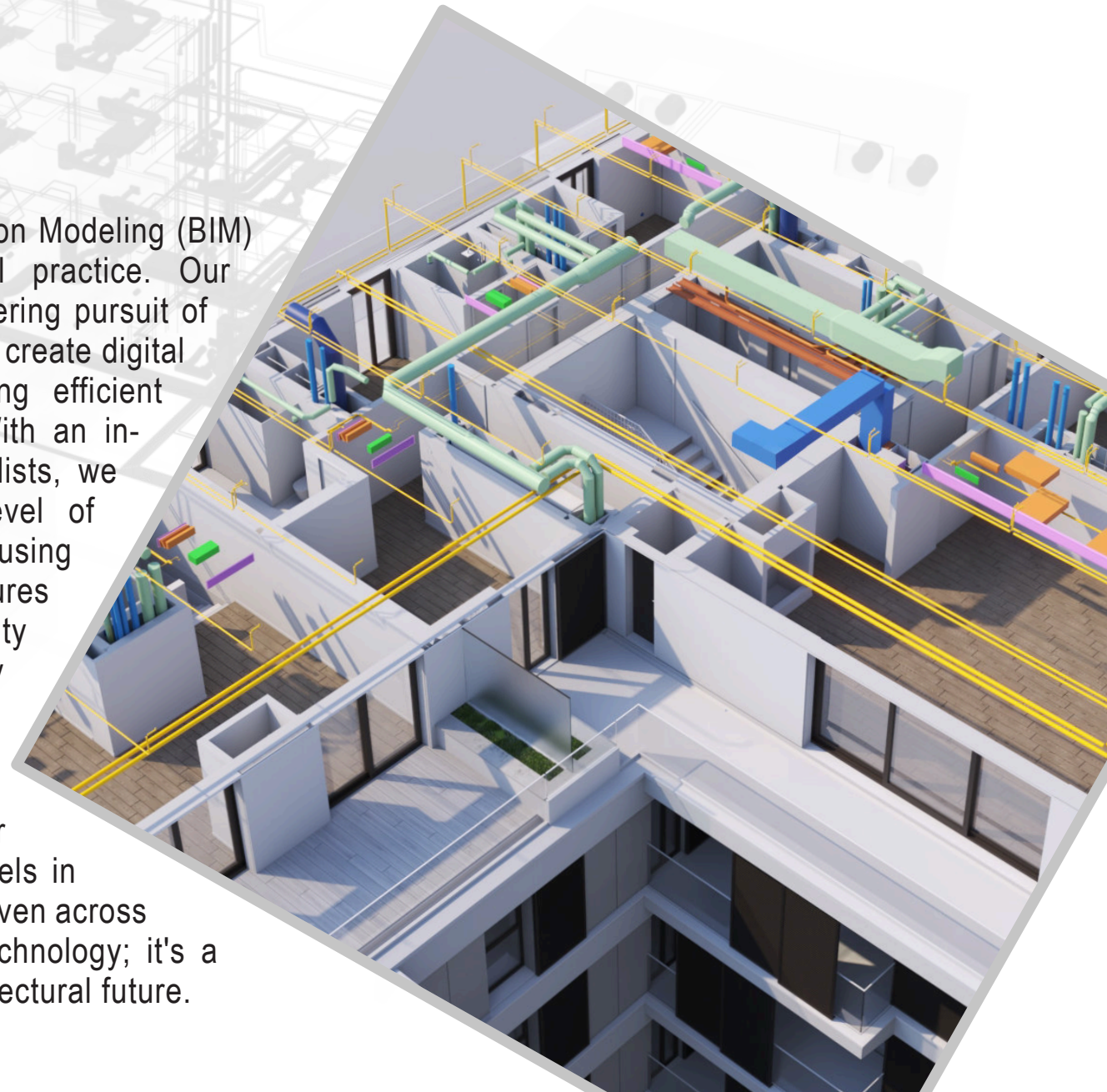
Quality serves as the unwavering bedrock of NLA and NLDEC. ISO 9001 certification guarantees excellence at every stage of our architectural journey. Our seasoned, multidisciplinary team, equipped with vast experience and expertise, meticulously adheres to stringent timelines and precise cost control measures. Quality is not merely a standard; it constitutes the very core of our strategic orientation. This commitment extends from our visionary leadership to every valued collaborator and partner, ensuring that our clients unfailingly receive the highest quality across every facet of our architectural practice. The result is the creation of spaces that consistently exceed industry norms, setting new benchmarks for those who engage with our work. Our dedication to quality is a testament to our ongoing pursuit of architectural excellence, one that continues to redefine the boundaries of design and sustainability, shaping a harmonious and sustainable future for all.



BIM

Building the Future with Precision

At NLA, we've embraced Building Information Modeling (BIM) as the cornerstone of our architectural practice. Our commitment to BIM stems from our unwavering pursuit of precision and innovation. BIM enables us to create digital representations of our projects, facilitating efficient design, collaboration, and construction. With an in-house team of architects and BIM specialists, we consistently raise the bar, achieving Level of Development (LOD) between 200 and 300 using Autodesk Revit. This methodology ensures optimal inter-operability and productivity across multidisciplinary teams. We employ Navisworks for BIM models' coordination and continually integrate tools like Civil 3D and Dynamo. Our use of Autodesk Construction Cloud DOCS empowers our clients to monitor the development of models in real time, fostering seamless collaboration even across international borders. BIM is not just a technology; it's a strategic commitment that shapes our architectural future.



NLA

Headquarters

Rua Calvet de Magalhães 244-2

2770-022 Paço de Arcos

Portugal

Tel: +351 214 544 430

email: adm@nla.pt

www.nla.pt

