

A close-up photograph of a golf club head and a white golf ball resting on a lush green grass field. The scene is illuminated by the warm, golden light of a setting or rising sun, creating a soft glow and long shadows. The background shows a rolling green landscape under a clear blue sky.

Golf resorts

by **N L A**

For over three decades NLA and its affiliate consultants in landscape design have been involved in masterplan design encompassing golf courses and Clubhouses as well as complementary real estate - hotels, single family homes, apartment buildings, villas, cluster homes and alike.

The key to a successful golf course is not only the way it is spread as an almost endemic feature - taking advantage of the topography, water sources, trees, views, wind and sunlight - but also the way the future built environment around it blends in and fills the available spaces so that the final outcome is a

perfect integration between nature and buildings.

NLA masters this approach through several achievements carried out in recent years. Some of them internationally recognized through several bestowed prizes from the hospitality industry.

Relying on NLA's track record expertise will result in professional deliverance, state of the art technical coordination and through our overseas' strategic partners it provides a reassurance of proximity and technical assistance wherever needed.

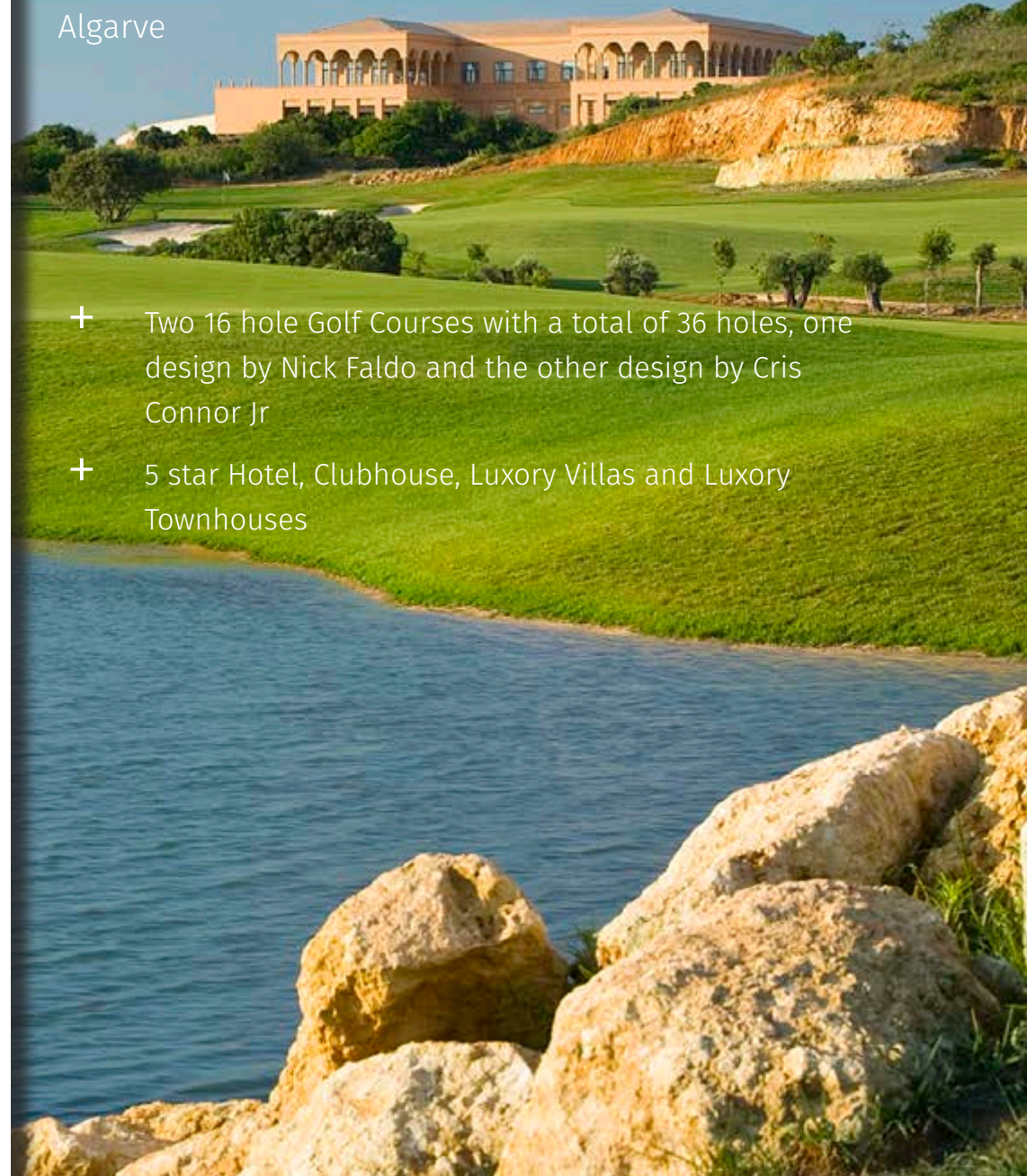




Amendoeira Golf Course masterplan

Algarve

- + Two 16 hole Golf Courses with a total of 36 holes, one design by Nick Faldo and the other design by Cris Connor Jr
- + 5 star Hotel, Clubhouse, Luxury Villas and Luxury Townhouses



Amendoeira Golf Course

clubhouse

Algarve

+ The largest Golf Clubhouse in Iberia





A. DeCastro 01.04.2006



J. J. Castro © 2006







Amendoeira Golf Course hotel

Algarve

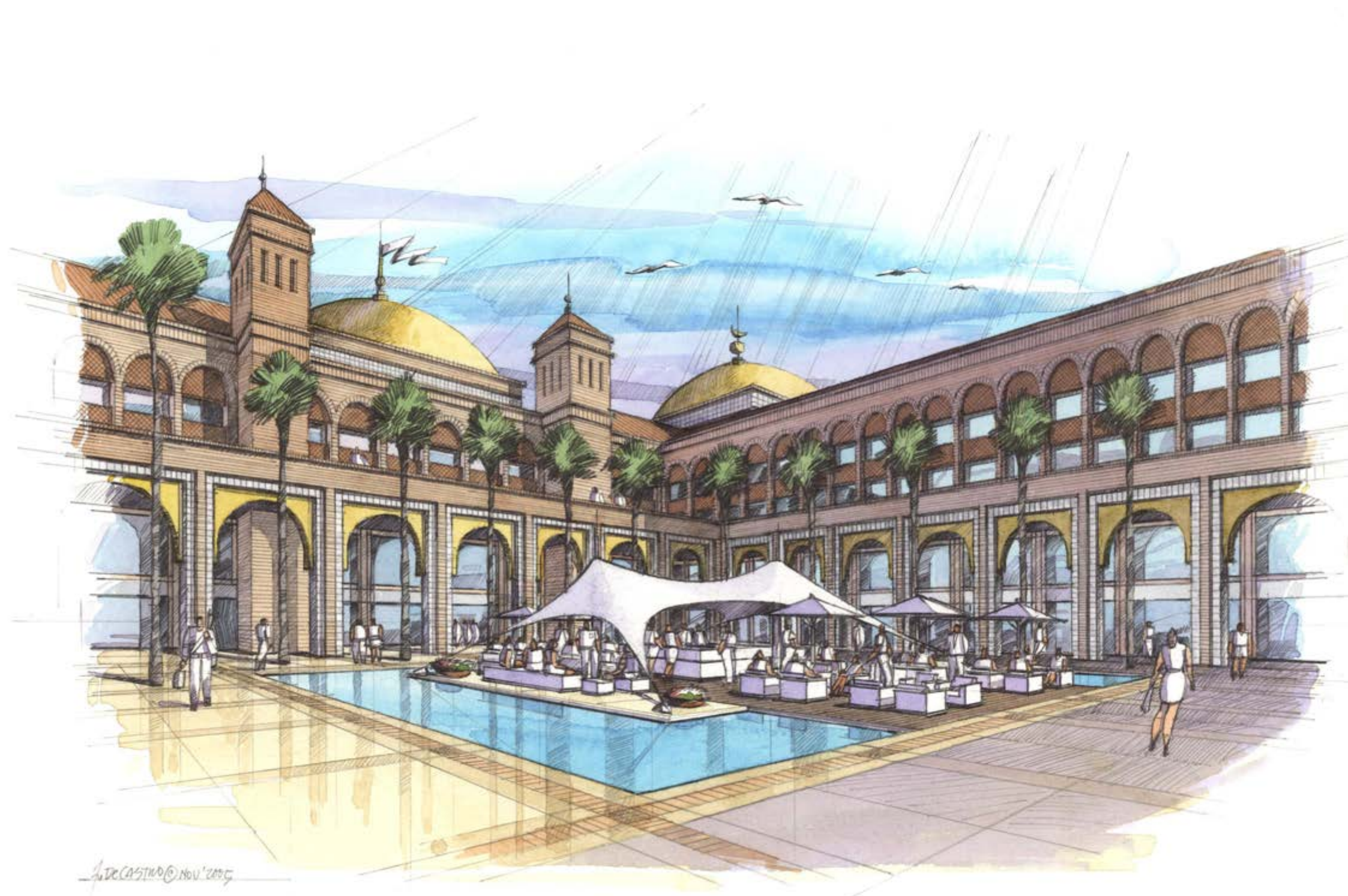


- + 5 star Hotel with 200 rooms,
- + 110 touristic apartments,
- + 42 touristic villas,
- + Conference facilities,
- + SPA,
- + 6 Restaurants and Bars

A. de Castro @ Mar 2007



J. DE CASTRO © NOV 2005



A. DE CASTRO © NOV '2005



A. DE CASTRO/INTEU'2005

WADI SAFAR

Clubhouse and Sports Center

Riyadh

- + Astonishing Impact of Nadji Architecture
- + 16 hole Championship Golf Course design by Greg Norman "The Shark"
- + Golf Academy with 9 hole Golf Course, Driving Range and 9 hole Pitch and Put
- + Clubhouse and Sports Center







Vilamoura Golf & Garden Resort

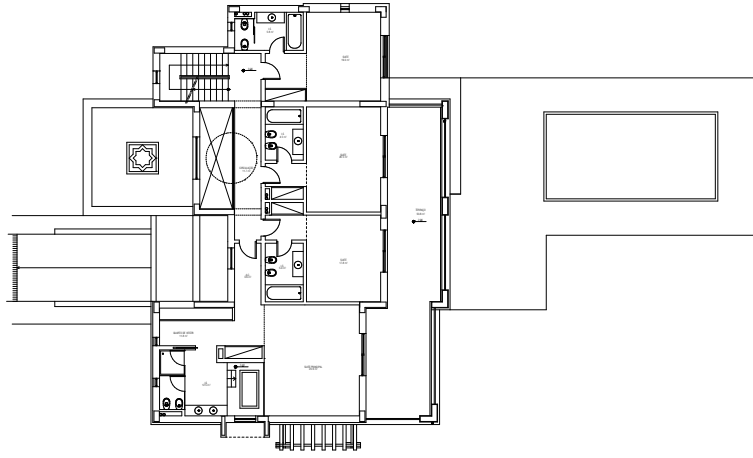
Luxury and tourist Villas

Algarve

- + In the vicinity of 5 Vilamoura's Golf courses and Vila Sol Golf course
- + 700 Luxury Villas and Townhouses and Private Clubhouse







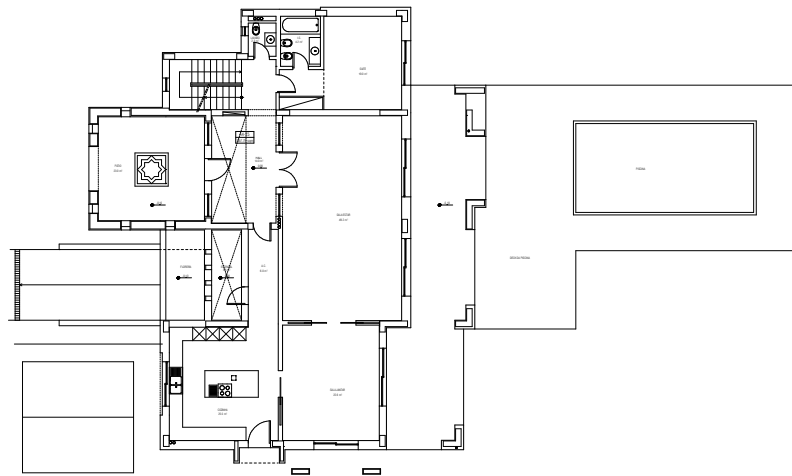
Level 1 - A4



Elevation -A4



Elevation -A4



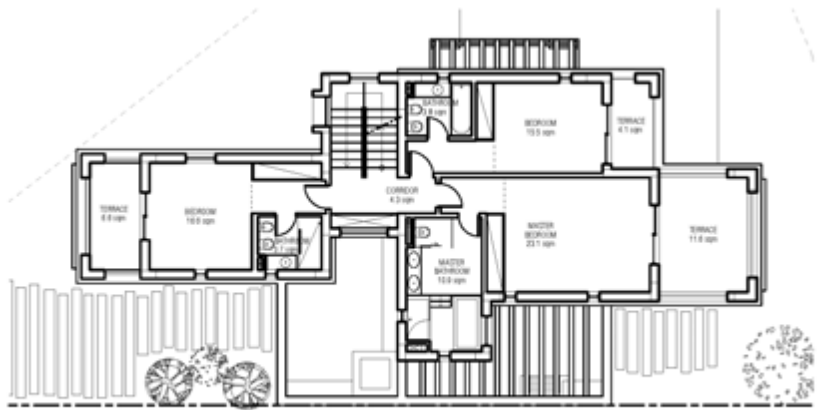
Level 0 - A4



Elevation -A4



Elevation -A4



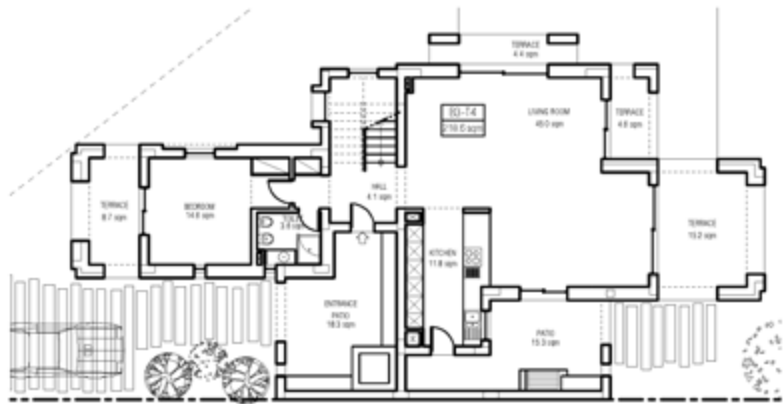
Level 0 - B3



Elevation -B3



Elevation -B3



Level 0 - B3



Elevation -B3



Elevation -B3



GARDEN D4

GARDEN D3

GARDEN D3



D4 5
3 (A)

ENTRAN

3 (A)

ENTRAN

Pine Cliffs Golf clubhouse

Algarve

- + "Inside a Resort with 5 star Sheraton Hotel, Villas and Apartments
- + "9 hole Golf Course





Pine Cliffs Golf Residence

Algarve

+ Luxury 5 star Tourist Apartments





Batalha Golf Course

Azores Islands - Portugal

- + 27 hole Golf Course
- + 5 star Hotel
- + Clubhouse
- + Luxury Tourist Villas
- + Tourist Apartments





Batalha Golf hotel

- + 5 star Hotel with 200 rooms,
- + Conference Center,
- + Spa,
- + Restaurants and Bars

Batalha Golf Tourist Apartments

+ 500 units







Batalha Golf Villas

+ 10 Tourist Villas



Dom Pedro Old Course Golf

Vilamoura

- + 5 Star Hotel and
Clubhouse inside a 18
hole Golf Course







Royal Óbidos Golf Resort

Óbidos - Portugal

- + 18 hole Golf course
- + Hotel
- + Clubhouse
- + Villas
- + Apartments





An architectural rendering of the Vilamoura World Hotel Golf & SPA complex. The image shows a large, multi-story hotel building with a central courtyard and swimming pool. To the left, there are several smaller, multi-story buildings, likely tourist apartments. The complex is situated on a hillside, with a golf course visible in the background. The rendering is in a light, monochromatic style with blue accents for the pools.

Vilamoura World

Hotel Golf & SPA

Vilamoura

- + Inside Dom Pedro Millennium Golf Course
- + Hotel, Clubhouse, SPA and Tourist apartments



Sustainability

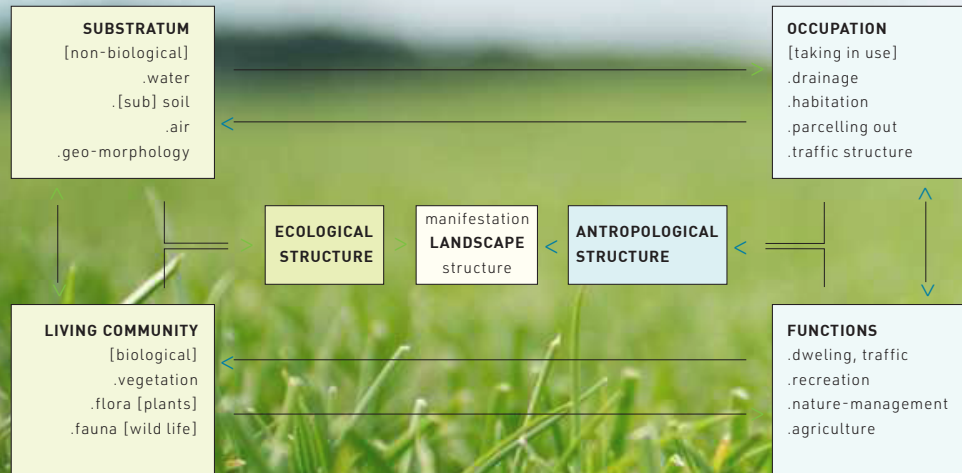
Sustainability should not be viewed as a FAD, but a standing commitment of every project at all stages.

Solar energy, natural ventilation, correct building layout and implantation on site, thermal insulation of the envelope and solar shading are tools we use, to different extents, in almost all our projects. Our target is to design buildings as responsive environment & energy systems capable of using to their benefit all the environmental factors available, at low operating costs. Maximized energy efficiency made possible by this strategy, together with sound environmental performance, will result in new living standards and increased competitive advantage for the buildings.

Master plans, as they dictate the design of future buildings, are the first element required to implement these principles.

Bearing this in mind we adopted the specific methodology successfully applied by NLA in Europe's largest Sustainable Master Plan – the Ecocentre Masterplan of Ispra, Italy.

LANDSCAPE AND ECOLOGY: A SYSTEM





N L A

NLA - Nuno Leónidas Arquitectos, Lda. | Rua Calvet de Magalhães 244-2º, 2770-022 Paço de Arcos | adm@nla.pt

www.nla.pt